



## **MORAVIA GLASS TECHNOLOGY, s.r.o.**

Vrchlického 310/48, Kyjov 697 01, CZECH REPUBLIC

Tel.: +420 518 610 274; Fax: +420 518 305403

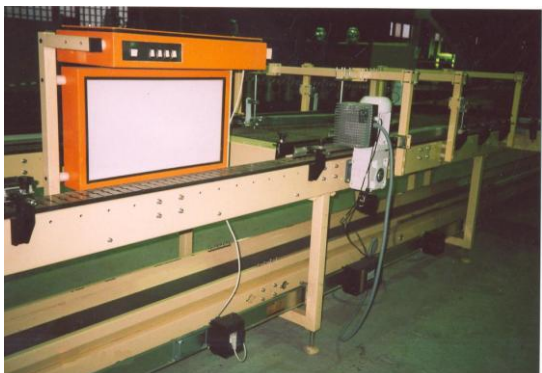
e-mail: [mgt@mgtkyjov.cz](mailto:mgt@mgtkyjov.cz)

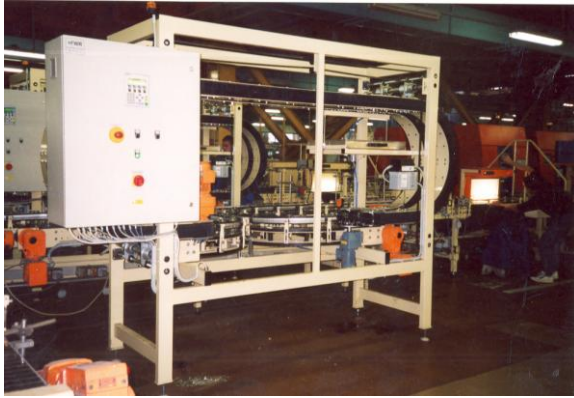
[www.mgtkyjov.cz](http://www.mgtkyjov.cz)

The company **MORAVIA GLASS TECHNOLOGY, s.r.o.** has almost fifteen year tradition in engineering production. We have been targeting our production on glass industry in the sphere of cold end from the very beginning. We also provide project and consulting service in this sphere. Our manufacturing programme can be extended according to the needs of the market. You can find corresponding designing department, factory building and assembly hall which can carry out general assembling of machinery including wiring in the premises of our company. We ensure the assembly and implementation of equipment at customer.

### **COLD END TRANSPORT SYSTEMS AND ACCESSORIES**

- ❑ conveyer
- ❑ conveyer with curve
- ❑ single liner
- ❑ accumulating table
- ❑ statistical table
- ❑ statistical check selector
- ❑ visual control station
- ❑ blow-out machine
- ❑ cullet conveyor





### **Lowerator**

- ❑ conveyer OMEGA
- ❑ fly-over conveyor
- ❑ product turnover device

The products are transported by means of chain with rubber drive dogs. The device for product separation is an integral part of the lowerators.

### **ROLLER AND CHAIN CONVEYORS**

- ❑ roller conveyor with lengths 1600, 1800, 2000, 2200 up to 3000 mm
- ❑ chain conveyor with lengths 1600, 1800, 2000, 2200, up to 3000 mm
- ❑ turn conveyor with RC
- ❑ turn conveyor with CC
- ❑ cross conveyor
- ❑ empty pallet magazine



### **PALLETIZERS**

They can be equipped with different withdrawing heads:

- ❑ universal gripper head for bottles and jars
- ❑ head with inflatable tubes
- ❑ AL vacuum head
- ❑ steel vacuum head

An accumulating table with aligning bar, roller conveyor and distribution box are the parts of palletizer by default.

The palletizer can operate in semiautomatic and full-automatic mode.



*tubes head*



*AL vacuum head*



*steel vacuum head*



### **SHUTTLE CAR**

They can be manufactured in different designs with chain or roller conveyors.

The number of conveyors on the car is determined by the amount of transported pallets.

The number of conveyors can be 1, 2 or 4 pieces.

The positioning of the shuttle car in individual withdrawing or transferring positions is ensured by means of laser admeasurement.

Shuttle car is supplied from a trolley line.

Rail and trolley line length is determined according to customer specification.



### **COLD END SPRAYS**



The wide of cold end spray travelling frame depends on the wide of particular annealing lehr.

Cold end spray can be manufactured with 1, 2 or 3 spray guns. It can be also equipped with depth nozzle.

Spray liquid is standardly transported from plastic barrel by means of a pump and cold spray can be equipped above standard with automatic mixing system.

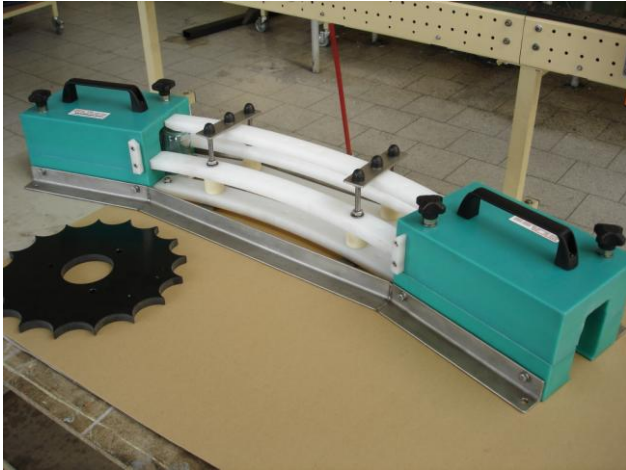
### **STACKERS**

It is intended for horizontal insertion of round and square bottles or jars to a packing machine - palletizer.

The bar which holds back the inserted rows of products until the formation of one layer is the integral part of the stackers.

The control which communicates with surrounding systems is the part of the stackers.





### **INVERTOR**

It is used for inversion of bottle upside-down with a view to blow out possible foreign matters. A bottle is inverted back and returned in a production line after blowout.

Two cubes made from slippery plastic are used for bottle inversion.

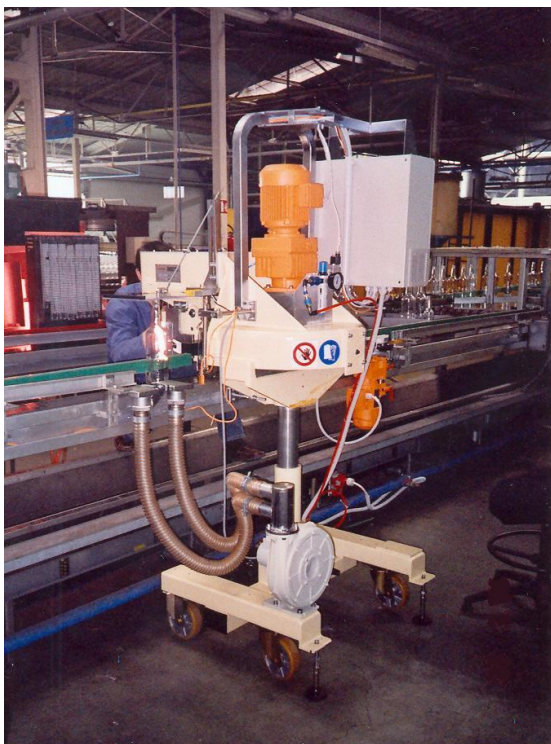
There is a guide in which a jar is blown out between the cubes.

### **BOTTLE SPACERS**

The device makes possible to separate the products on single-row conveyor.

The products leave the device separately. The device is able to handle many different sizes and shapes of products in wide speed range.

The device is automatic, side universal – left or right.



### **PRESSURE TESTER OF ROUND PRODUCTS - SIT**

The testing machine is intended for pressure testing of round products. It rejects the products with defects as non-circularity, edginess on perimeter, outline defect, damaged inner surface during forming but mainly the containers, which do not comply with stress level to a container body.

The machine makes possible an easy installation to the single-row conveyor of check line in the left or right position. It is placed on the chassis which makes possible its easy movement.

The product separator, cullet chute, moderated pressure fan with blow-out nozzles and line blockage watcher are the integral parts.

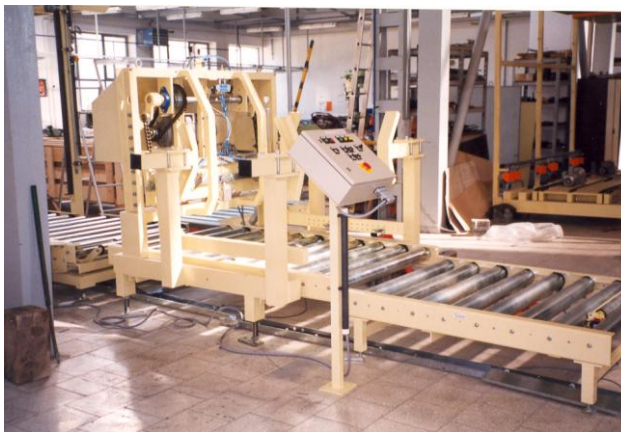
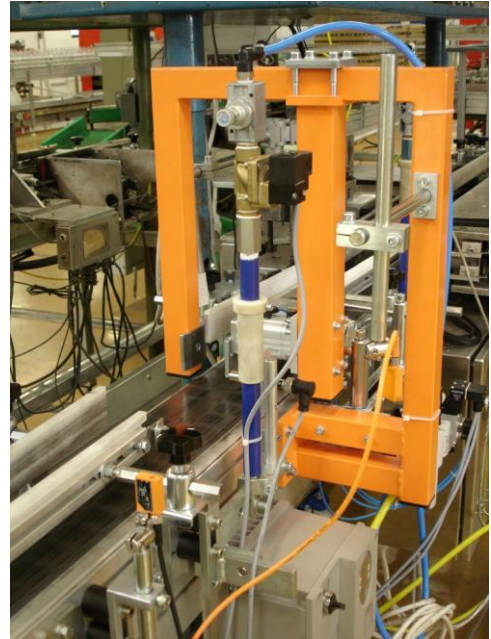


### **OVALITY CALIBER**

Test instrument intended for the check of product label area. If size of this area is bigger or equal to product overall dimension the labels are worn away during the contact among products.

The product passes through between calibration plates set to the maximum width of label area. The product which does not pass through these plates is rejected.

An air-pressure brake, chute for rejected products and machine control are the parts of this machinery.



### **PALLET MAGAZINE**

The machine can withdraw individual empty pallets from a stack and transfer them in a palletized system or withdrawal from the palletized system and their stacking.

Pallet magazine can work with both functions in combination as well.

The machine has own control of functions but it is necessary to create the way of communication during

insertion in system.

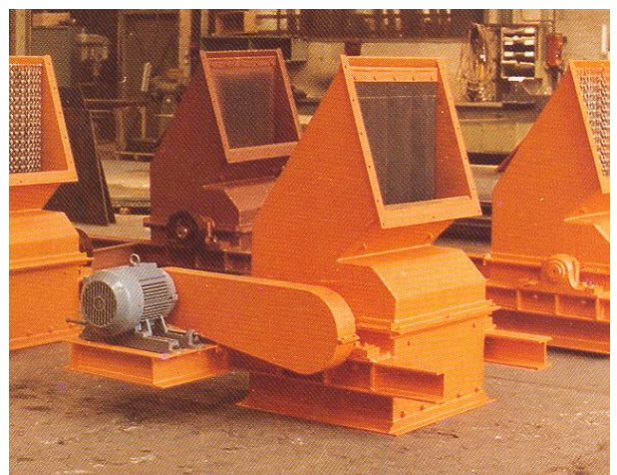
### **HAMMER IMPACT CRUSHER**

The machine can have 3 designs according to output:

- ❑ KD 500/5 (output 5 t/hour)
- ❑ KD 700/15 (output 15 t/hour)
- ❑ KD 900/25 (output 25 t/hour)

It is used for crushing of container glass to the size which can be returned into a melting furnace.

The size of crushed cullet is determined by distance between impact bar and rotating hammer. The impact bar is adjustable for this purpose.



### **GATHERING CONVEYOR**

The gathering conveyor is intended for horizontal or sloping transport of loose materials, for example glass batch.

The main belt conveyor and cleaning bulk conveyor are joined in a closed box construction. The box construction is closed so that it ensures tightness against falling of transported material out.

The hopper which can have hand drive, electric gearbox or pneumatic drive is the part of the conveyors.



### **SCRAPER CONVEYOR**

The scraper conveyor is used for cooling of hot cullet and gobs from production machines.

The chute is filled with water for material cooling.

The chain conveyor which transports material to a slip hopper moves inside the chute. The chute has different construction widths and lengths depending on transport and cooling capacity.

### **BUCKET ELEVATOR**

The bucket elevator is used for vertical transport of loose abhesive material bottom-up.

Endless conveyor belt to which the steel buckets are bolted down is the material transport element.

The construction is assembled from basic foot section with reversing drum, sections of double-chamber shafts and driving section with driving drum and drive by means of electric gearbox.

Belt tensioning is placed in elevator driving section.

